

5149.001  
(BASIS OF BEARINGS)  
S.89°00'26"W.

1305.00'

392.60'



SHEET 6 OF 6

# HIPPOCRATES PUD/CLF

BEING A REPLAT OF HIPPOCRATES HEALTH INSTITUTE, ACCORDING TO THE PLAT THEREOF, ON FILE IN THE OFFICE OF THE CLERK OF THE CIRCUIT COURT IN AND FOR PALM BEACH COUNTY, FLORIDA, RECORDED IN PLAT BOOK 104, PAGES 118 AND 119, AND A REPLAT OF A PORTION OF TRACT 7, BLOCK 3, PALM BEACH FARMS COMPANY PLAT NO. 3, ACCORDING TO THE PLAT THEREOF, ON FILE IN THE OFFICE OF THE CLERK OF THE CIRCUIT COURT IN AND FOR PALM BEACH COUNTY, FLORIDA, RECORDED IN PLAT BOOK 2, PAGES 45 TO 54, LYING IN SECTION 28, TOWNSHIP 43 SOUTH, RANGE 42 EAST, PALM BEACH COUNTY, FLORIDA.  
JANUARY, 2012

## EASEMENT DETAIL SHEET

### NOTE

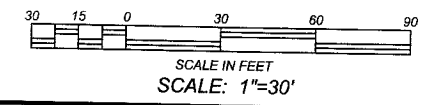
IN THOSE CASES WHERE EASEMENTS OF DIFFERENT TYPES CROSS OR OTHERWISE COINCIDE, DRAINAGE EASEMENTS SHALL HAVE FIRST PRIORITY, UTILITY EASEMENTS SHALL HAVE SECOND PRIORITY, ACCESS EASEMENTS SHALL HAVE THIRD PRIORITY, AND ALL OTHER EASEMENTS SHALL BE SUBORDINATE TO THESE WITH THEIR PRIORITIES BEING DETERMINED BY USE RIGHTS GRANTED.

### LEGEND

- SET 4"x4" CONCRETE MONUMENT WITH DISK (AS NOTED ON MAP)
- CONCRETE MONUMENT FOUND (AS NOTED ON MAP)
- SET 5/8" IRON ROD & CAP STAMPED "WSC LB 4569"
- SET MAG NAIL & DISKED STAMPED "WSC LB 4569"

### AT&T EASEMENT CURVE TABLE

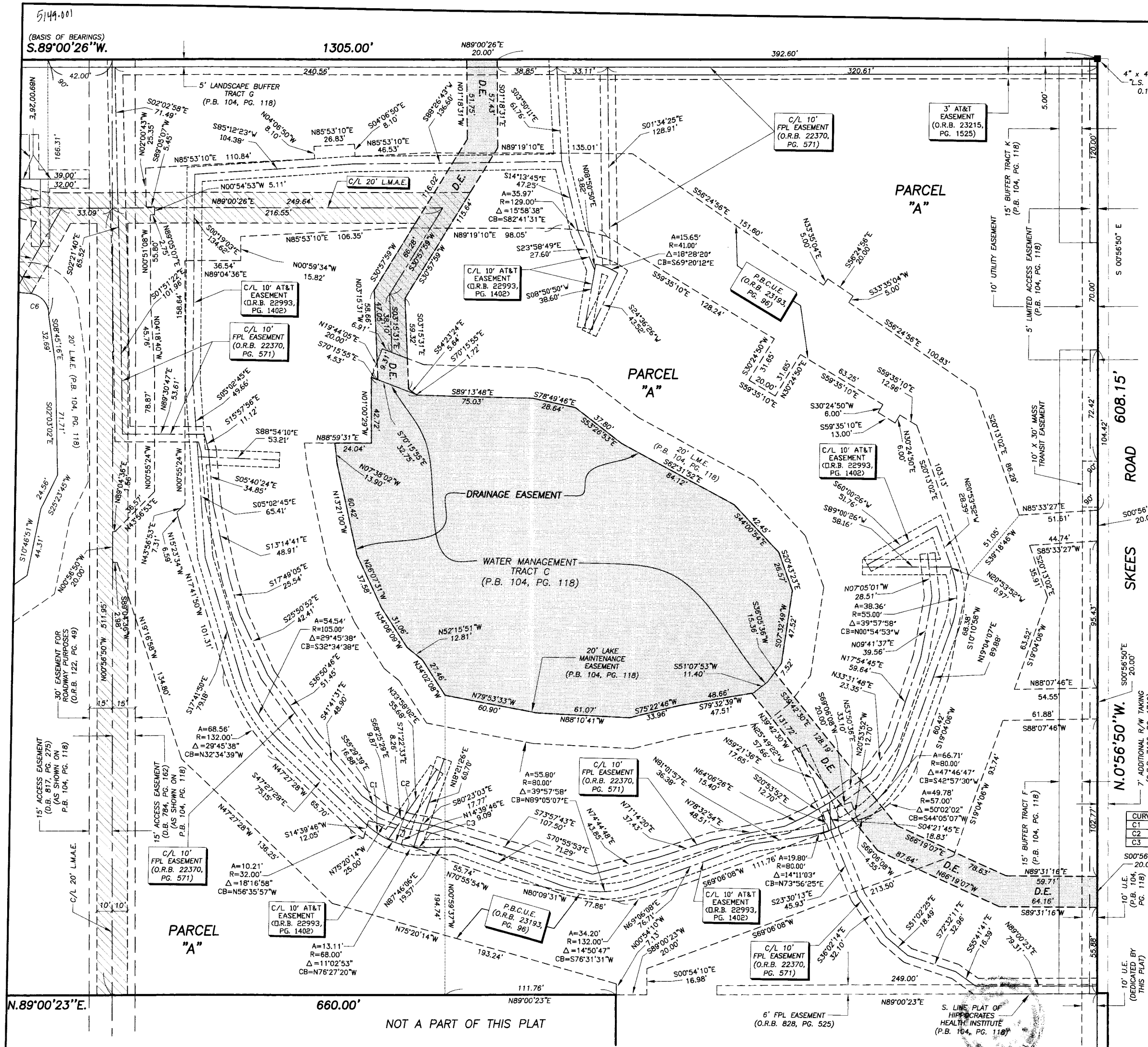
CURVE	RADIUS	ARC LENGTH	CHORD LENGTH	CHORD BEARING	DELTA ANGLE
C1	55.00'	17.73'	17.66'	S 56°41'38" E	18°28'20"
C2	55.00'	17.43'	17.36'	N 75°00'41" W	18°09'46"
C3	55.00'	7.81'	7.81'	N 88°09'44" W	08°08'21"



## PLAT OF HIPPOCRATES PUD/CLF



FIELD:	JOB No.: 04-1160.034	F.B. PG.
OFFICE: R.C.	DATE: SEPT. 2008	DWG. No.: 04-1160-110
C/K'D:	REF.: 04-1160.DWG	SHEET 6 OF 6



NOT A PART OF THIS PLAT

S. LINE PLAT OF  
HIPPOCRATES  
HEALTH INSTITUTE  
(P.B. 104, PG. 118)